

**FZD7 / Frizzled 7 Antibody (N-Terminus)**  
**Rabbit Polyclonal Antibody**  
**Catalog # ALS10789****Specification**

---

**FZD7 / Frizzled 7 Antibody (N-Terminus) - Product Information**

Application	IHC-P
Primary Accession	<a href="#">O75084</a>
Reactivity	Human, Mouse, Rabbit, Hamster, Monkey, Pig, Bovine, Dog
Host	Rabbit
Clonality	Polyclonal
Calculated MW	64kDa KDa
Dilution	IHC-P~~N/A

**FZD7 / Frizzled 7 Antibody (N-Terminus) - Additional Information****Gene ID** 8324**Other Names**

Frizzled-7, Fz-7, hFz7, FzE3, FZD7

**Target/Specificity**

Human FZD7 / Frizzled 7. BLAST analysis of the peptide immunogen showed no homology with other human proteins, except FZD1 (60%), FZD2 (60%).

**Reconstitution & Storage**

Long term: -70°C; Short term: +4°C

**Precautions**

FZD7 / Frizzled 7 Antibody (N-Terminus) is for research use only and not for use in diagnostic or therapeutic procedures.

**FZD7 / Frizzled 7 Antibody (N-Terminus) - Protein Information****Name** FZD7**Function**

Receptor for Wnt proteins. Most frizzled receptors are coupled to the beta-catenin canonical signaling pathway, which leads to the activation of disheveled proteins, inhibition of GSK-3 kinase, nuclear accumulation of beta-catenin and activation of Wnt target genes. A second signaling pathway involving PKC and calcium fluxes has been seen for some family members, but it is not yet clear if it represents a distinct pathway or if it can be integrated in the canonical pathway, as PKC seems to be required for Wnt-mediated inactivation of GSK-3 kinase. Both pathways seem to involve interactions with G-proteins. Activation by WNT8 induces expression of beta-catenin target genes (By similarity). Following ligand activation, binds to CCDC88C/DAPLE which displaces DVL1 from FZD7 and leads to inhibition of canonical Wnt signaling, activation of G-proteins by CCDC88C and triggering of non-canonical Wnt responses (PubMed:<a

href="http://www.uniprot.org/citations/26126266" target="\_blank">26126266</a>). May be involved in transduction and intercellular transmission of polarity information during tissue morphogenesis and/or in differentiated tissues.

**Cellular Location**

Cell membrane; Multi-pass membrane protein. Endosome membrane; Multi-pass membrane protein. Note=Associated to the plasma membrane in the presence of FZD7 and phosphatidylinositol 4,5-bisphosphate (PIP2). Localized in recycling endosomes in other conditions

**Tissue Location**

High expression in adult skeletal muscle and fetal kidney, followed by fetal lung, adult heart, brain, and placenta Specifically expressed in squamous cell esophageal carcinomas

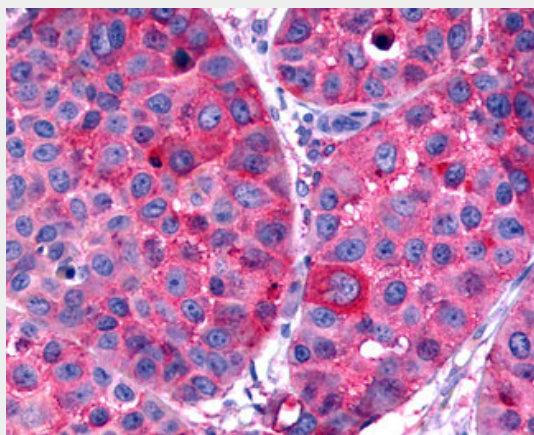
**Volume**

50 µl

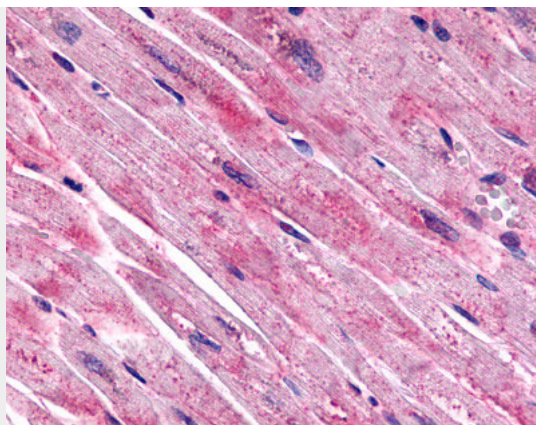
**FZD7 / Frizzled 7 Antibody (N-Terminus) - Protocols**

Provided below are standard protocols that you may find useful for product applications.

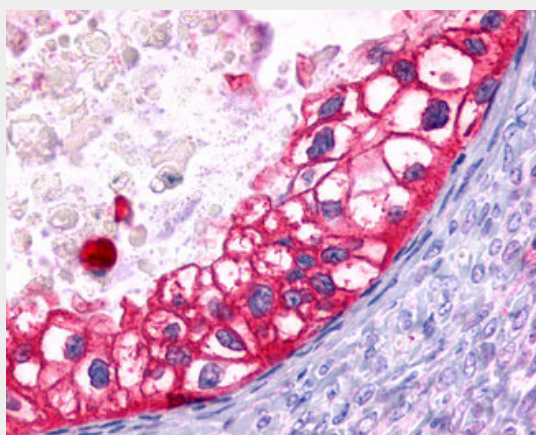
- [Western Blot](#)
- [Blocking Peptides](#)
- [Dot Blot](#)
- [Immunohistochemistry](#)
- [Immunofluorescence](#)
- [Immunoprecipitation](#)
- [Flow Cytometry](#)
- [Cell Culture](#)

**FZD7 / Frizzled 7 Antibody (N-Terminus) - Images**

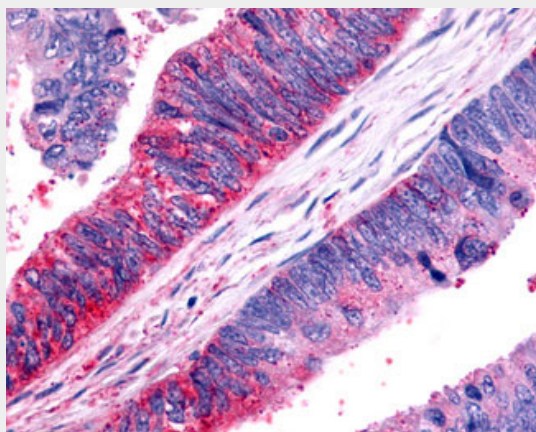
Anti-FZD7 / Frizzled 7 antibody IHC of human Skin, Melanoma.



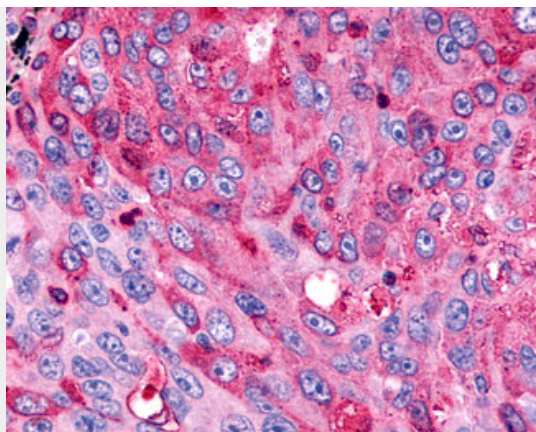
Anti-FZD7 / Frizzled 7 antibody ALS10789 IHC of human heart, cardiac myocytes.



Anti-FZD7 / Frizzled 7 antibody IHC of human Ovary, Carcinoma.



Anti-FZD7 / Frizzled 7 antibody IHC of human Colon, Carcinoma.



Anti-FZD7 / Frizzled 7 antibody IHC of human Lung, Non-Small Cell Carcinoma.

#### **FZD7 / Frizzled 7 Antibody (N-Terminus) - Background**

Receptor for Wnt proteins. Most of frizzled receptors are coupled to the beta-catenin canonical signaling pathway, which leads to the activation of disheveled proteins, inhibition of GSK- 3 kinase, nuclear accumulation of beta-catenin and activation of Wnt target genes. A second signaling pathway involving PKC and calcium fluxes has been seen for some family members, but it is not yet clear if it represents a distinct pathway or if it can be integrated in the canonical pathway, as PKC seems to be required for Wnt-mediated inactivation of GSK-3 kinase. Both pathways seem to involve interactions with G-proteins. May be involved in transduction and intercellular transmission of polarity information during tissue morphogenesis and/or in differentiated tissues.

#### **FZD7 / Frizzled 7 Antibody (N-Terminus) - References**

Tanaka S.,et al.Proc. Natl. Acad. Sci. U.S.A. 95:10164-10169(1998).  
Hillier L.W.,et al.Nature 434:724-731(2005).  
Mural R.J.,et al.Submitted (SEP-2005) to the EMBL/GenBank/DDBJ databases.  
Sagara N.,et al.Biochem. Biophys. Res. Commun. 252:117-122(1998).  
Kwon H.S.,et al.Mol. Cell. Biol. 29:2139-2154(2009).